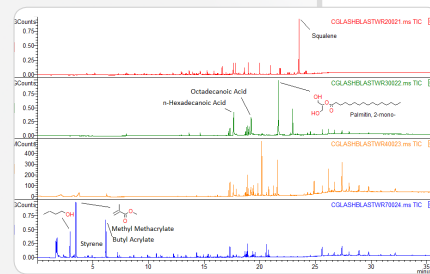
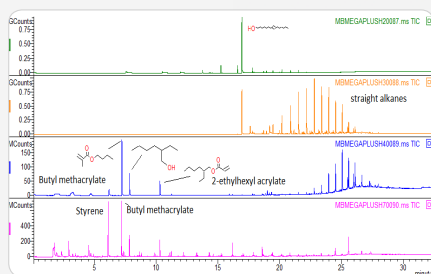
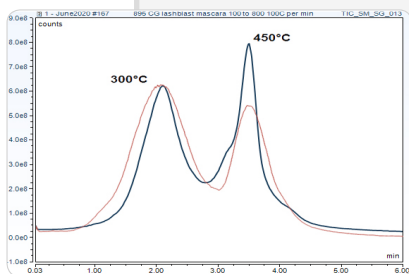
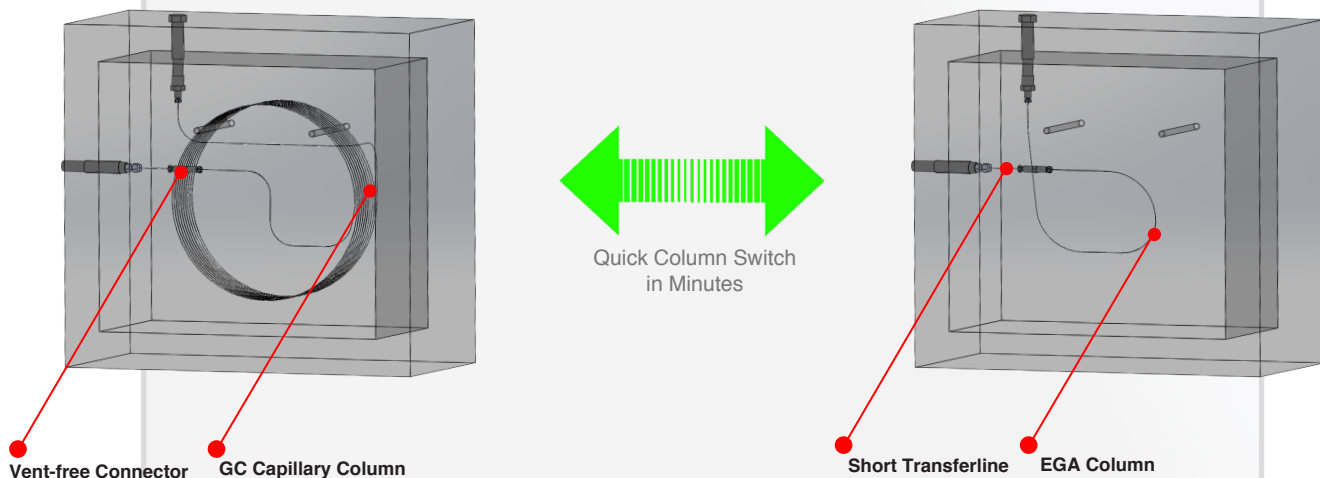


Evolved Gas Analysis (EGA) is a powerful tool in initial screening of unknown polymers before stepping into the multi-step thermal extraction analysis. The challenge during this step is to switch the regular GC column with the short EGA column. This Vent-Free Adapter saves valuable time to perform the column switch without the need to revacuum the mass spectrometer. Unlike our competition, this adapter is universal and work with all mainstream GC/MS.



Left data shows the overlay of the EGA runs on two mascara samples from different manufacturers. Both of them had two regions of thermal degradation. The peak position of each degradation region from the two samples was identical at 300 °C and 450 °C.

Middle and right figures show chromatograms of these two mascara samples using a multi-step sequence of 200 °C, 300 °C, 400 °C and 700 °C after switching out the short EGA column to separate components among 4 chromatograms and provides more in depth information.

### Technical Specifications:

| Vent-free Adapter for EGA |   |
|---------------------------|---|
| Compatibility             | Universal   |
| Included Parts            | Vent-free Connector, Short Transferline, EGA Column |