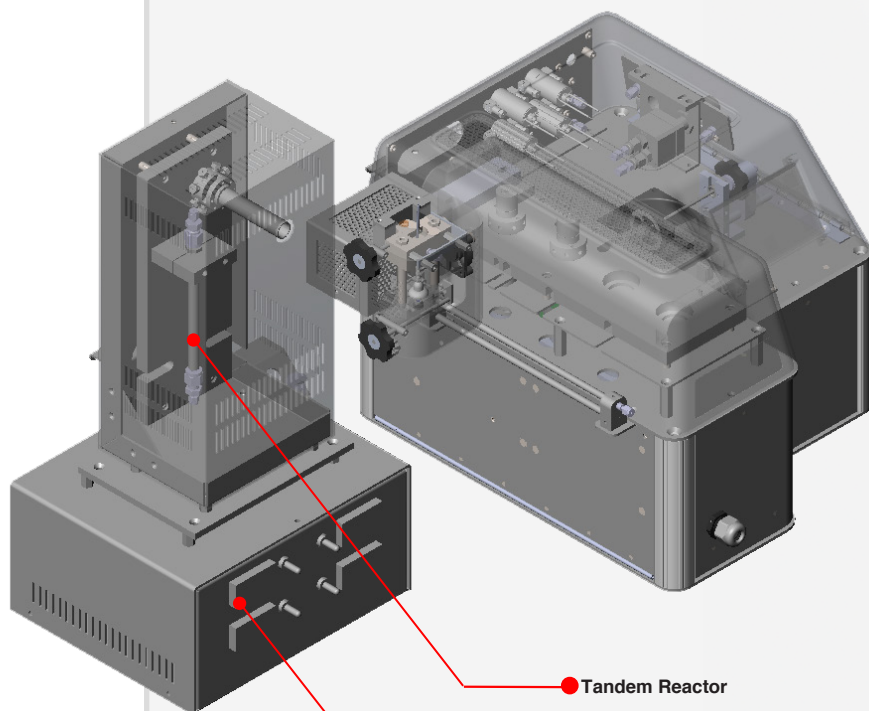


When configured with the External Tandem Reactor, the pyrolysates exiting from the DISC chamber will be purged into this 2nd reactor that contains a heated catalyst bed for secondary reaction.



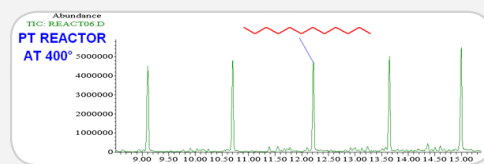
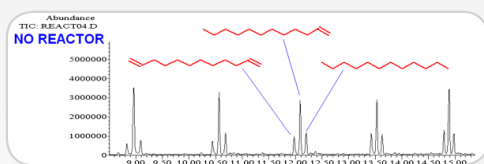
Quartz Reactor Core



Easy-to-use Temperature Controller

Tandem Reactor

Reactor Temperature Controller



Polyethylene pyrolyzed at 750 °C in hydrogen. Left: No reactor, Right: Reactor packed with platinum at 400 °C

Technical Specifications:

	External Tandem Reactor
Compatibility	6150 (Py-Rx-GC Only) 6200 (Py-Rx-GC and Py-Rx-Trap-GC)
Max Temperature	800 °C
Reactor Catalyst Core Dimension	3 mm ID X 3.75" L
Max System Pressure	16 psi
Reactor Body Supplied	1x Quartz, 1x Stainless Steel